

SOUTH EAST MARTS SALES NEWS



Auctioneers

HAILSHAM'S HEADLINES



Auctioneers

ARDINGLY COLLECTIVE SALE
Saturday 2nd September

**ENTRIES CLOSE FRIDAY 18th
AUGUST**

THURSDAY 10TH AUGUST 2023
HAILSHAM MARKET

Market Street, HAILSHAM, Sussex. BN27 2AG

Tel:- 01323 844874

Mobile:- 07890 359622

Roger Waters' Mobile 07860 663345 (Home 01273 832360)

e-mail address ~ info@southeastmarts.co.uk

visit our web site ~ www.southeastmarts.co.uk

FARM DIRECT

TEL: RRW 07860 663345 or 01323 844874

DAIRY DIRECT

16 Friesian Holstein in-calf cows and 4 in-calf heifers

In calf to British Blue/Aberdeen Angus

Majority calving late Oct/Nov

TB 4 parish, Excellent health status

BULL BANK & BEEF BREEDING STOCK

Sixteen Pedigree Aberdeen Angus cows

with seventeen calves at foot

March/April born

Running with Pedigree Aberdeen Angus bull from 1st June

TB4 High Health Status

Seven organic continental cross beef cows with Aberdeen Angus calves at foot, April/May born, TB1

Hereford Bull

TB4, West Sussex

HAY/ STRAW DIRECT

Hailsham Area

EX FIELD

Round Bale Meadow Hay

Can deliver locally

Winter Barley & Winter Wheat straw

Lewes area

in field or can deliver

Standing Grass Twenty Four Acres

Bodle Street Green

Tel 07584 285170

PIG DIRECT

Gloucester type sow; Good mother, in-pig to Landrace boar

Oxford & Sandy sow; currently with litter, not been back to boar

Oxford 7 sandy breeding boar, 15 months, proven

Call Alex Moss; 07718 532971

Funeral Notices

Bill Rogers

Saxon Hill Farm, Battle

passed away on 4th August aged 93

A great supporter of Haywards Heath and Hailsham Market

His funeral will take place at Hastings Crematorium

on Thursday 31st August at 1.15pm

HAILSHAM MARKET

THE STORE CATTLE CENTRE OF THE SOUTH

Next Store Cattle Sale
Wednesday 16th August 2023

Entries include;

Special Homebred consignment

32 Simmental cross steers and heifers, 11/12 months

from TJ, RT & CD SIGGS

Special second consignment

25 Aberdeen Angus cross and British Blue cross steers and heifers, 22/24 months

from **T CARR**

other entries include;

14 Aberdeen Angus cross steers & heifers, 10/11 months

HR WALTON

5 purebred Aberdeen Angus steers & heifers, 14/16 months

JAMIES FARM

2 Aberdeen Angus cross, 2 Sussex cross steers & heifers, 15/17 months

& 1 pedigree Sussex heifer, 17 months

J KING

1 Sussex x heifer, 21 months

P FORSYTH

4 Aberdeen Angus x steers & heifers, 1 Charolais x heifer, 22/29 months

A GILES

NEXT SALE OF STORE CATTLE

Wednesday 30th August 2023; Please let us know your entries

Hole Farm Rams

Inaugural on Farm Ram Sale of 50 Shearling Rams

- ✓ 25 Registered High Index Suffolk Rams
- ✓ 25 Durno Hybrid Rams (Texel x Charollais)
From Logie Durno



Saturday 26th August
Viewing from 3.00pm
Sale 5.30 pm



Sale to be conducted by South East Marts at
Hole Farm, Hadlow Down, East Sussex, TN22 4HB

For more information, please contact

James Hamilton 07789 713514

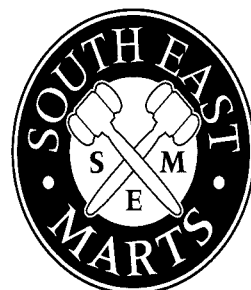
jb.hamilton@aol.com

www.holefarm.com

DOLPHIN SHEEP FAIR SHOW & SALE



Auctioneers



Auctioneers

THURSDAY 21st SEPTEMBER 2023

AT THE SOUTH OF ENGLAND SHOWGROUND,
ARDINGLY, NR. HAYWARDS HEATH,
WEST SUSSEX



Main Sponsors
AGRICULTURAL CENTRAL
TRADING LTD.



Entries Close Friday, 25th August 2023

SCHEDULE & ENTRY FORMS **AVAILABLE NOW**

From our website

www.southeastmarts.co.uk

Or Request by email; info@southeastmarts.co.uk

DOLPHIN SHEEP FAIR

Judges; P Carnaghan & T Holt

PRIZE MONEY

FIRST PRIZE: £50 - SECOND PRIZE: £25 - THIRD PRIZE: £15

Class 1 - Best Pen of 25 Ewe Tegs or over.

any breed or cross

Class 2 - Best Pen of 25 Lambs or over

SPECIAL PRIZES

Ewe Lamb Special of £25

for the Best Pen of Ewe Lambs in Class 2

Lamb Special of £150

and Reserve Lamb Special of £75

for the Champion Consignment of 100 Lambs or over.

Breeding Ewe Special of £25

for the Best Pen of 25 Young Breeding Ewes or over

SILVER CHALLENGE CUPS

to be awarded for

Best Pen of Breeding Sheep

(Ewe lambs only eligible in Class 2)

Best Pen of Lambs in the Show

and **Jack Carr Memorial Trophy** Presented by

John & Peter Carr for the **Best Run of Sheep** (minimum 100)

SOUTH EAST MARTS

would like to thank

**AGRICULTURAL CENTRAL
TRADING LTD**

for being the MAIN SPONSORS

DOLPHIN SHEEP FAIR 2023

PRIZE MONEY, ROSETTES & PRIZE CARDS, etc.

and for kindly donating a range of special

SHEEP SUPPLEMENTS & SHEEP EQUIPMENT prizes

to be awarded alongside the prize money.

Special Prize of £100 for the best pen of

North of England Mule Shearlings sponsored by

CCM Auctions (Craven Cattle Marts Ltd, Skipton)



South Eastern Texel Group



**SOUTH EAST MARTS ARE PLEASED TO
BE HOLDING THE 2023
SOUTH EASTERN TEXEL SOCIETY BREED
SHOW AND SALE AT THE DOLPHIN
SHEEP FAIR**

For more information please contact

Sarah Pile 07792661323



southeasterntexelgroup.info@gmail.com

HAILSHAM MARKET - PRIMESTOCK DAY

PRIME STOCK – WEDNESDAY 9TH AUGUST

PRIME CATTLE (0) *Auctioneer: Roger Waters*

None on offer this week

CULL COWS (0) *Auctioneer: Roger Waters*

None on offer this week

CALVES (0) *Auctioneer: Roger Waters*

None on offer this week - Plenty entered already for next week, 16th August including; Fifteen Fleckvieh cross, Danish Red cross and Holstein bull calves;

PIGS (9) *Auctioneer: Alex Moss*

John Brooker rings the bell this week at **200p per kg** (£192) with quality Landrace, closely followed by **Alan Rose** with quality Duroc at **195p per kg and 190p per kg**. Store pigs off the Richter scale from **Nick Hazeltine** at **£85** per head. More store pigs needed to fulfil demand. Please let us know what you have coming in.

THE NEXT ARDINGLY COLLECTIVE AUCTION

SATURDAY 2nd SEPTEMBER 2023

Plants, Shrubs, Horticultural, Builders Equipment, Contractors Plant, Garage, Vintage & New Tools, Livestock & Agricultural Equipment, Ride-on & Pedestrian Mowers, Chainsaws, Garden Machinery, Generators, Tractors, Trailers etc.

ENTRIES CLOSE FRIDAY 18TH AUGUST

Entry forms available now – contact us in the office on **01323 844874** or you can go online and download one from our website at **www.southeastmarts.co.uk**

Auctioneers

HAILSHAM MARKET - PRIMESTOCK DAY

SHEEP – 1589

HS2, the Rwanda and Ascension Island immigrant resettlement programme will not be delivered by this or the next (Labour) government. It is reported in The Times that vegan food processors have experienced a 300% drop in sales as consumers return to meat.

MILK LAMBS (716) Auctioneer: Nick Young Overall average 261.1p

Superb trade for the Milk Lambs this week - the figures speak for themselves. Average pence per kg **UP** 4p on the week, Top £ per head is **UP** £17 on the week, and the number of lambs **UP** +300 this week. Great to have our regular vendors PM Bignell & Foord & French in the top spot.

Leading prices: PM Bignell £147, P Foord & P French £143, D C Walker £142, £139, G Harvey £140, £139, R G Whyman £139, R parks £138, TR Holt £136, D Johnson £136

Leading prices per kilo: JWE Hobden 302p, C Howe 297p, 289p, D Johnson 292p, 288p, B D Wheeler 292p, 291p (twice), G Harvey 281p, P Bignell 280p, R G Whyman 278p

STORE SHEEP (496) Auctioneer: Nick Young

Big runs of store lambs were well rewarded; Megan Lucas and North Horsted Farms both did it right- providing quantity and quality and were rewarded with top prices- above some we were seeing in the fat section! Well done Megan and Lucy. The store pens were crowded once again; Plenty of grass in the field has made for plenty of demand in the market.

Leading prices; North Horsted Farm £108 (thrice), M Lucas £106, £99 (twice) £98 T Wigmore £105, K Reed £104, S R Powell £98

CULL EWES & RAMS (272) Auctioneer: Nick Young

Our favourite Welsh man Ian Richards took advantage of the strong ram trade; selling his aged Texel ram to £280 and Bluefaced Leicester rams to £145. Makes sense to clear out the older rams now and buy your replacements at the Dolphin Sheep Fair!

Leading prices: I Richards £280 (ram) £145 (twice), JCH Garner £170, M Smith £146 (twice), J & S Harmer £135 (ram), JCH Garner £134, M Kevern £132 (twice).

BREEDING EWES (102) Auctioneer: Nick Young

A very ready trade for the tegs on offer. More wanted- let us know what you have.

Please let us know exactly what you have to help us to make the best price of your stock. For up-to-date marketing advice please call the sheep hotline 01323 844874 or the mobile 07890 359622 today. We want your sheep at Hailsham!

K&T
FOOTWEAR



07715 035 131

www.dealerboots.co.uk

LEADING
FOOTWEAR
SUPPLIERS
EST. 1962.



info@kandtfootwear.co.uk



www.kandtfootwear.co.uk



SUSSEX STEEL CONSTRUCTION

DANIEL HUNTER-EVANS
MOB: 07951 438793
EMAIL: DANIEL@SUSSEXSTEELCONSTRUCTION.CO.UK



AGRICULTURAL & INDUSTRIAL
BUILDINGS, REPAIRS & RENOVATIONS

R.Popovic & Son
Agricultural Contractors Est.1966

ROUND BALE WHEAT STRAW FOR SALE
POLEGATE AREA
EX FIELD OR CAN DELIVER

Call Nick Popovic on 01323 832002 or
07889 177434

Competitive Direct Drilling Service

Using our proven Simtech Aitchison direct drill we seed into all surfaces - grasses, clovers, brassicas, cereals, pulses, maize and all mixtures. The unique T-slot boot allows a perfect environment for the seeds to germinate, along its 3 metre sowing width with 20 rows (15cm). This method saves time and money compared with more traditional re-seeding methods, but is also capable of stitching and rejuvenating existing crops.



P.T.O.

Town Place Farm Direct Drilling Services (Haywards Heath)

Tel: 01825 790341 Mob: 07970 621832 Email: Charlie@townplacefarm.co.uk



GRAHAM LONG

STEEL CONSTRUCTION LTD

FOR ALL YOUR AGRICULTURAL BUILDING NEEDS



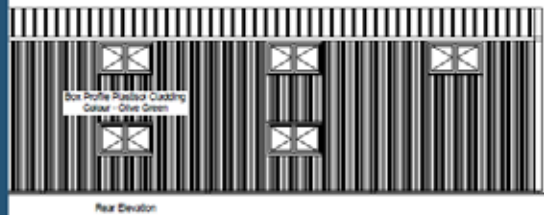
TEL: 01435 865370 MOB: 07795 226296
graham@glconstruction.co.uk



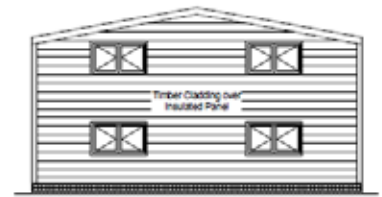
Planning | Project Management Procurement Services

We offer a fixed price
28 day Agricultural Prior
Notification Application
including:

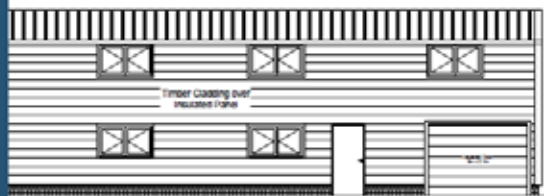
- Ordnance Survey Mapping
- Design Drawings
- Application
- Local Council Fees



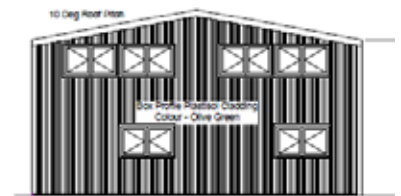
Rear Elevation



Left Elevation



Front Elevation



Right Elevation

For more information or to arrange a site visit call or email:
Nick@nfieldprojects.co.uk | 07738 703498

I'm looking for a field, large garden/paddock to rent for a few months, approximately 3-4 months, it's to house 3 Alpacas, 2 Sheep and 2 Emus all friendly they will live together.

If you can help , contact Tony 07890 842431



J. HOBDEN AGRI

GET IN TOUCH FOR SHEEP SHEARING, ANY SIZE FLOCK.

LIVESTOCK – FENCING – AGRICULTURAL CONTRACTING

TEL: 07786 186 226



CLEAR, RELEVANT & PROFESSIONAL ADVICE WHEN YOU NEED IT

Nick Young FRICS

01435 865077

e-mail: nickyoung@watsonsestates.co.uk


Farm insurance, the way it should be

We're a family-run business and pride ourselves on forging long term relationships with our farming and agricultural clients. Covering the South East, South West and Midlands, we deliver an extensive range of farm, agri business and equine policies tailored to you.

www.county-insurance.co.uk/farms

Farm & Equine **01865 844985**

General **01865 842084**

 Follow us **@County_Farm**

